



## GILDA COURT

MILL HILL, NW7 2QN

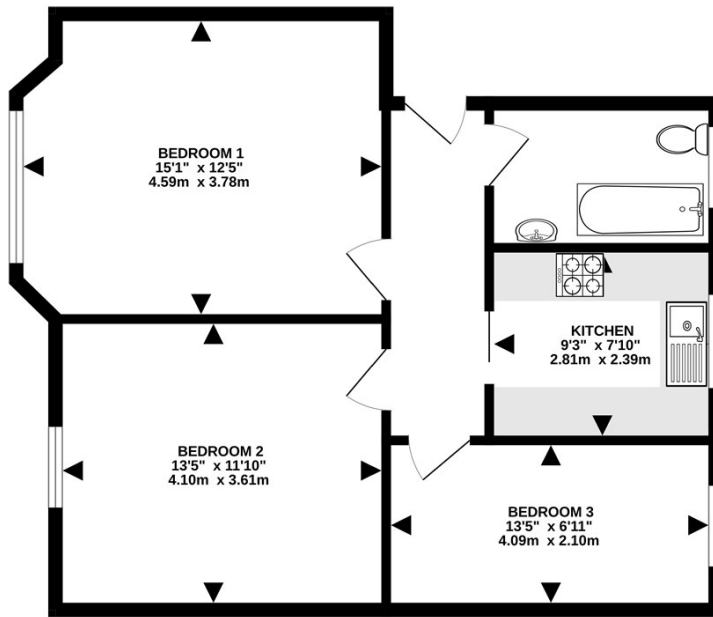
£2,000 PER MONTH

Spacious Two / Three Double Bedroom Apartment, Using the Living Room as the 3rd Bedroom, Ground Floor, Purpose Built Flat, Located, Near transport & shops. Available 8th September 2026

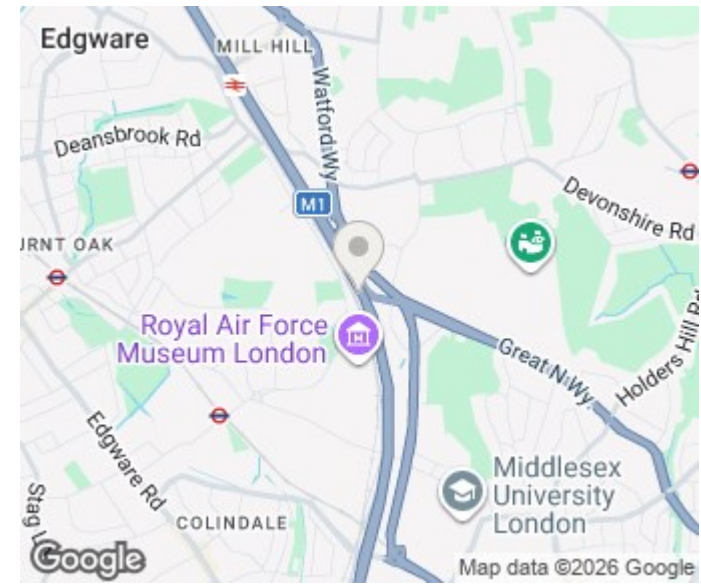


JAYSON  
RUSSELL

GROUND FLOOR



Whilst every attempt has been made to ensure the accuracy of the floorplan contained here, measurements of doors, windows, stairs and any other items are approximate and no responsibility is taken for any error, omission or mis-statement. This plan is for illustrative purposes only and should be used as such by any prospective purchaser. The services, systems and appliances shown have not been tested and no guarantee as to their operability or efficiency can be given. Made with Metropix 10/2022



Energy Efficiency Rating		
	Current	Potential
Very energy efficient - lower running costs		
(92 plus) <b>A</b>		
(81-91) <b>B</b>		
(69-80) <b>C</b>		
(55-68) <b>D</b>		
(39-54) <b>E</b>		
(21-38) <b>F</b>		
(1-20) <b>G</b>		
Not energy efficient - higher running costs		
<b>England &amp; Wales</b>	EU Directive 2002/91/EC	

Agents Note: Whilst every care has been taken to prepare these particulars, they are for guidance purposes only. All measurements are approximate and are for general guidance purposes only and whilst every care has been taken to ensure their accuracy, they should not be relied upon and potential buyers/tenants are advised to recheck the measurements

Hendon Lettings  
 20 Parson Street  
 London  
 NW4 1QB

0208 202 1111  
 info@jaysonrussell.com  
 www.jaysonrussell.com

